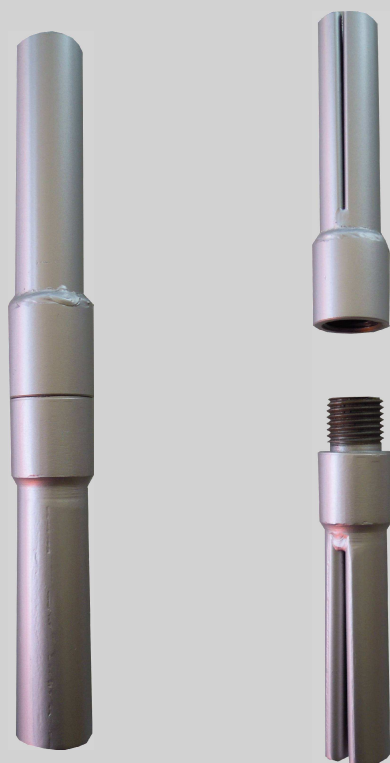


Bellex

belloli



Connectable



Properties

- Quick installation
- Immediate punctual anchorage with expansion shell
- Possibility to connect several anchor segments for a total length of up to 12 m or more
- Expansion by water ⁽²⁾
- Segment length: 1 – 6 m ⁽¹⁾

Technical data

Parameters	Unit	120C	160C	240C
Breaking load min.	[kN]	100	140	200
Elongation A ₅	[%]	20 – 30	20 – 30	20 - 30
Profile diameter	[mm]	27.5	36	36
Original tube diameter	[mm]	41	54	54
Tube thickness	[mm]	2	2	3
Inflating pressure	[bar]	300	240	300
Borehole diameter	[mm]	32 – 39	45 – 52	45 - 52

⁽¹⁾ Other sizes available on request

⁽²⁾ We suggest the use of the pump Bellex 312E

All of the above-mentioned data are subject to modification without prior notice