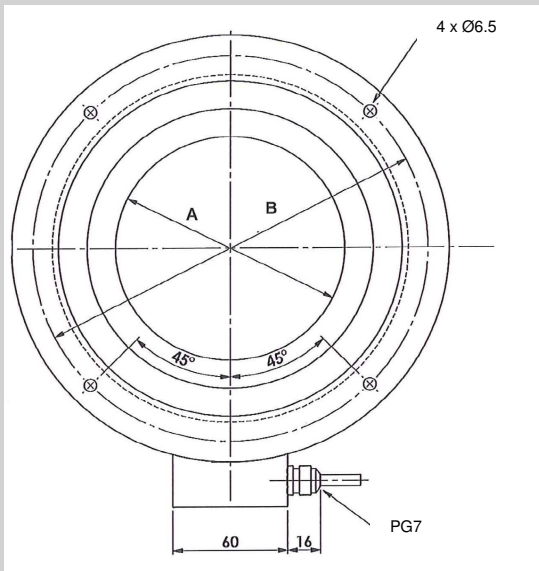
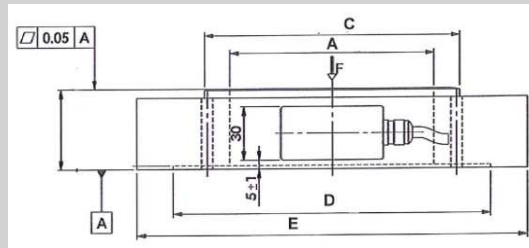


Load cells



Properties

- Capacity from 0 to 3000 kN
- Stainless Steel Construction 17-4 PH
- Protection Class IP68



Parameters	Unit	CCR50	CCR75	CCR120	CCR165	CCR225
Capacity max.	[kN]	1000	1000	1500	1800	3000
Weight	[kg]	6.3	5.4	9.7	12.3	16.3
A	[mm]	50	75	120	165	225
B	[mm]	145	145	207	252	302
C	[mm]	95	95	150	195	250
D	[mm]	131.5	131.5	186.5	231	285
E	[mm]	163	163	229	275	320

Technical properties

Nominal sensitivity	2.0 mV/V \pm 0.1%
Temperature factor on zero	\pm 0.005% F.S./ $^{\circ}$ C
Temperature factor on span full scale	\pm 0.005% F.S./ $^{\circ}$ C
Insulation	> 5000M Ω
Electrical supply	2-15 Vcc
Creep at nominal load (20')	\pm 0.03 F.S
Input resistance	700 \pm 5 Ω
Output resistance	700 \pm 20 Ω
Safe overload (% of full scale)	150% F.S.
Ultimate overload	> 300% F.S.
Compensated temperature range	-10 \div 50 $^{\circ}$ C
Operating temperature range	-20 \div 70 $^{\circ}$ C